

EPSON[®]
EXCEED YOUR VISION



Epson SD-10 Spectrophotometer

Sales Reference Guide

Version 1.0ae

The first Epson engineered spectrophotometer



*Confidently communicate color with the Epson SD-10 - an **easy-to-use, portable,** and **full-featured** color measuring device.*

Epson's commitment to print quality is reinforced with the SD-10. SureColor® wide format customers now have a tool to accurately measure color.

\$899 MSRP
ESTIMATED

Available September 2022

Who is the Epson SD-10 for?



Print Shop / Production

Shop managers who establish the production workflow can set the Epson SD-10 as a tool for all printer operators and other QC involved staff.

Example:

Measure both target color and output color to confirm it is within spec.



Designers

A small, portable device to capture colors from almost anywhere.

Example:

Fashion designers shopping trends can measure anywhere they go and save them into a color palette for later.



Salespeople

Measure customer color requirements to understand what the print department can deliver.

Example:

Measure color at customer site and use the mobile app to confirm that the print department can reproduce that critical color.

Overview & Features

Product Overview

Power LED ring

Intuitive, easy-to-use controls

Large LCD display – read measurements on the spot

Large 7.6 mm measurement window

Sliding protective cover with calibration tile

USB-C Port

Compact Design
Fits in the palm of your hand

3.15" 80 mm

3.15" 80 mm

1.38" 35 mm

EPSON

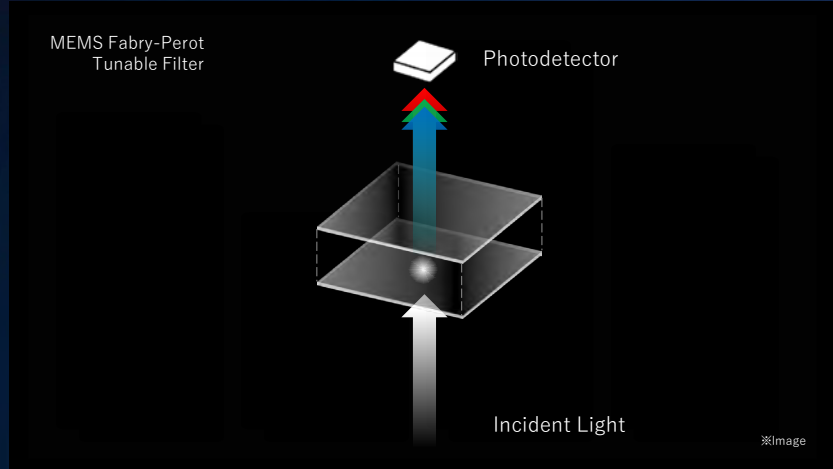
Spot [Bluetooth icon] [Battery icon]
L ----
a ----
b ----
ΔE ----
Start

Stand-alone Operation



- **Battery powered** — measure color anywhere, without cables, with an 1860 mAh capacity Li-ion battery.
- **Built-in LCD screen** — quickly see the resulting L*a*b* values.
- **Full featured controls** — simple and intuitive operation.
- **Color indicator** — the measured color is shown as a border around the screen.
- **Compare Color** — The last two colors are always compared, and a delta-E value is shown.

Epson Spectrophotometer | Key Technology



The Epson SD-10 features **Epson original MEMS technology** used to construct extremely accurate sub-micron devices.

The result is an **extremely small, fast, and accurate color measuring device** – built by Epson.

Large Aperture & 360° Illumination



- **Large, 7.6 mm Aperture**
Measure up to 1.5x the area of similar products.
- **Nine Bright LEDs**
Illuminate the surface from all directions (360 degrees), eliminating shadows and irregularities.
- **Increased Accuracy**
The combination of large aperture and LEDs increases the accuracy of color measurements.

Meets Industry Standards



- **Professional Spectrophotometer**
More robust color measurements compared to a colorimeter.
- **Meets Industry Standard Measurement Capabilities**
Features settings expected from a professional color measurement device.



Software & Extended Features

Epson Spectrometer Smartphone App

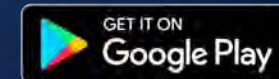
Epson Edge Print



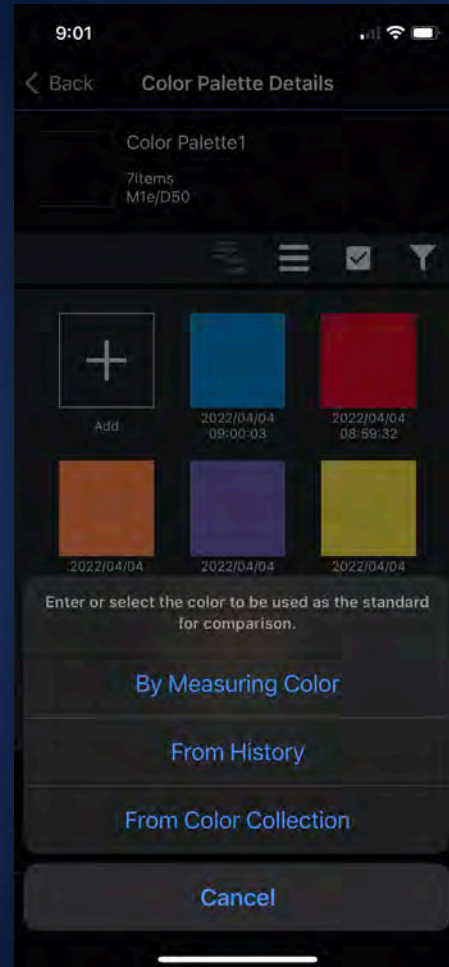
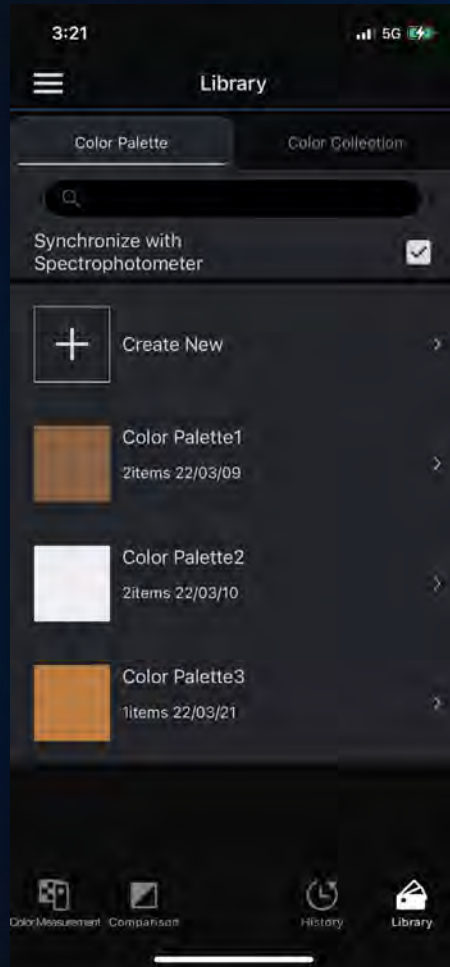
Epson Spectrometer Mobile App



- **Epson Spectrometer Mobile App** – Download the companion mobile app at no cost.
- Connect to a mobile device via **Bluetooth® Low Energy** wireless technology.



Mobile App: Create Color Palettes



- Create **custom color palettes** for fashion, home improvement, or customer projects.
- Measure and record critical spot colors / brand colors for later use.
- Name each palette to keep project colors organized.

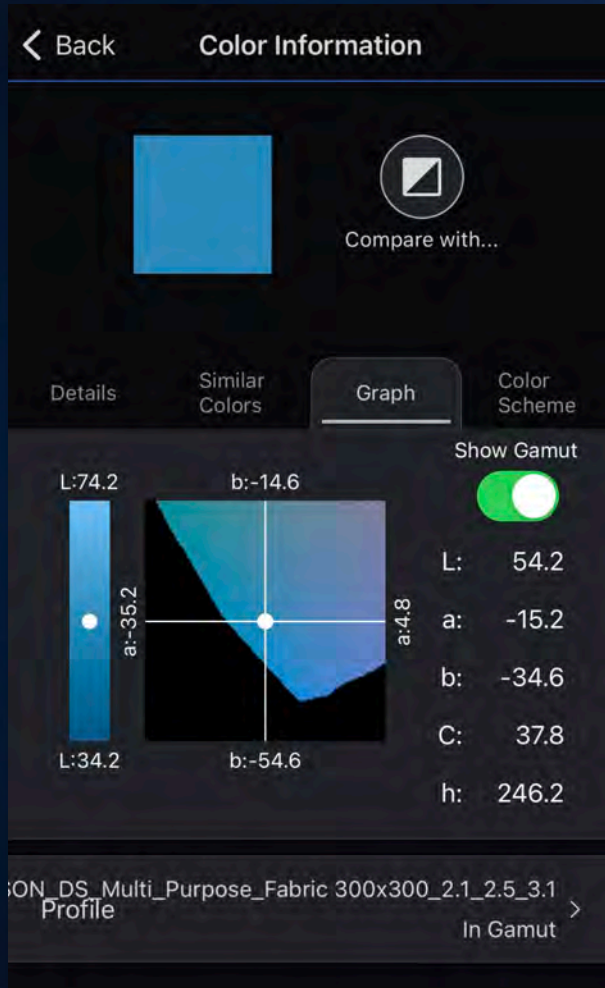
Mobile App: Pantone® Colors



- PANTONE® Solid Coated Collection, Uncoated Collection, and more are included with the Epson Spectrometer mobile app.
- Find similar **PANTONE® colors** and know how close of a match they are to a measured color.



Mobile App: Color Graph



- **Can I Print This?** — Measured colors can be checked against a printer's profile to see if it is in- or out-of-gamut.
- **Color Confidence** — demonstrate to a customer in the field on demand that a color can be reproduced by showing that color's position compared to a printer's gamut.

Mobile App: Color Library Notes

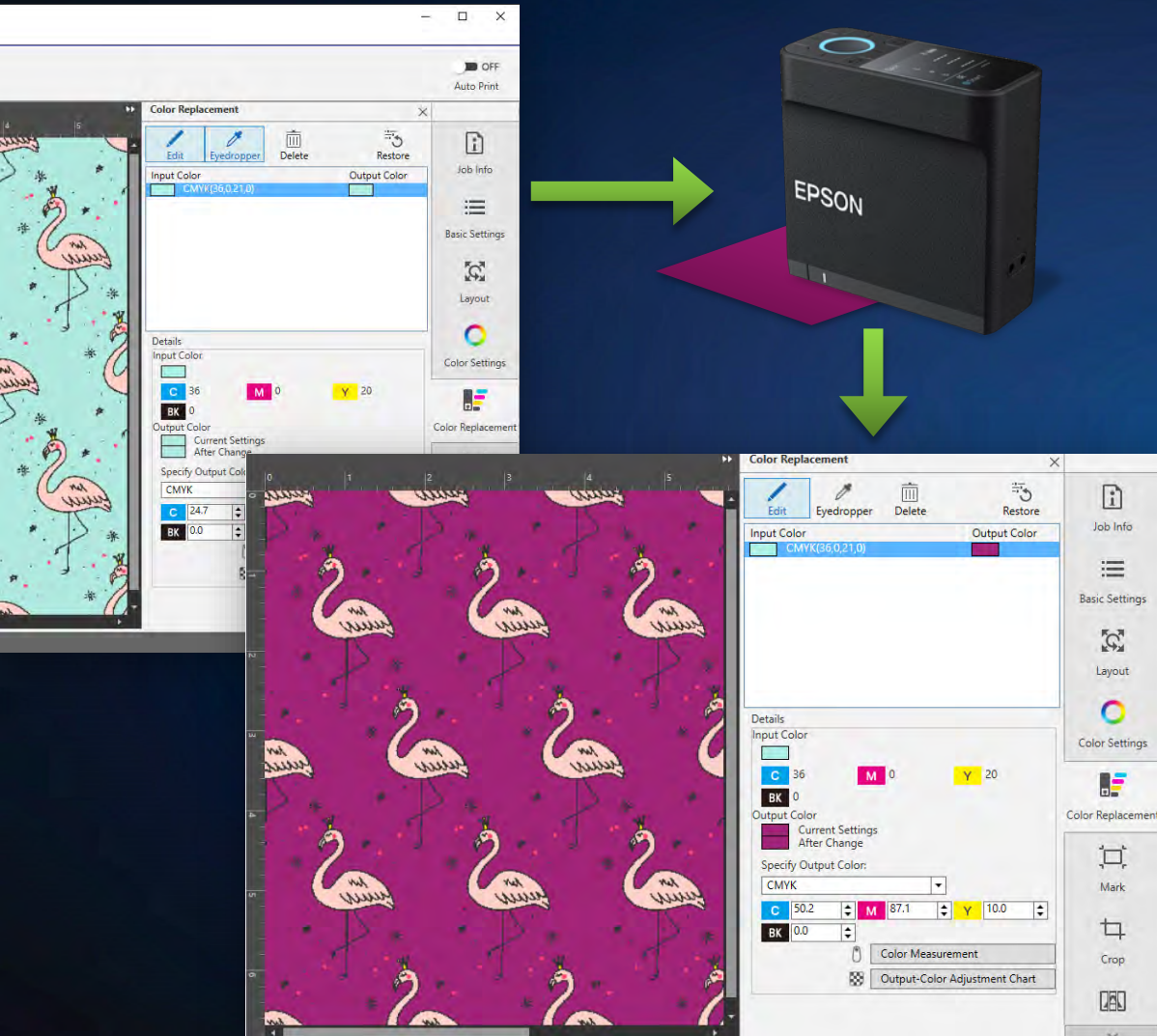


Optional Information	
Date/Time	2022/03/29 15:19:39
M Factor	M1e
Serial Number	XA5U000016
Notes	
Photo	>
Location Information	>

Build a library of project or customer colors by including important context clues right when they are measured.

- **Date & Time** — Measured colors are tagged with date and time information to help keep track of which color is which.
- **Make Notes** — Add a note to a color and never forget what was measured.
- **Photo & Location** — Include a photo of the measured surface and even include location information.

Epson Edge Print Integration

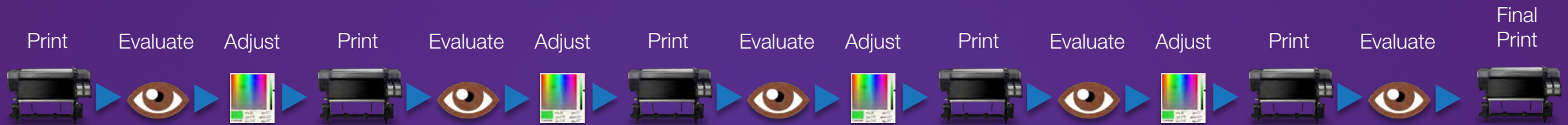


- **Direct Connect to Epson Edge Print**
Measure colors directly into the workflow (via Bluetooth or USB).
- **Simple Color Replacement**
Use the measured color to replace any solid color in an image.
- **Save Time**
Measure target color directly into the printing workflow and avoid color “guessing games” that waste time.

Save Time with a Streamlined Workflow

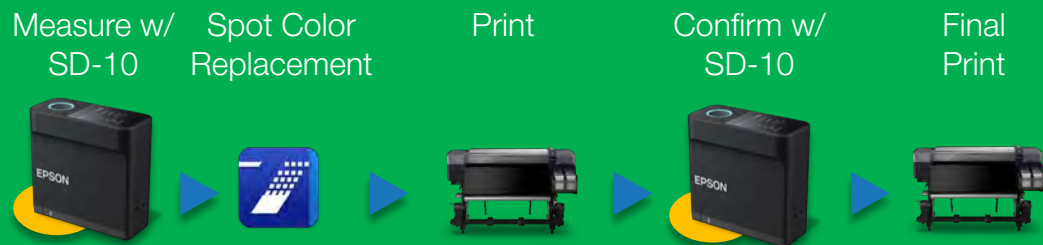
Without the SD-10:

Color matching workflow without a spectrometer.
Manual adjustment and evaluation of colors happens several times until it is (maybe) correct.



With the SD-10:

Color matching workflow with the Epson SD-10.
Measure directly into Epson Edge Print.



Results in:

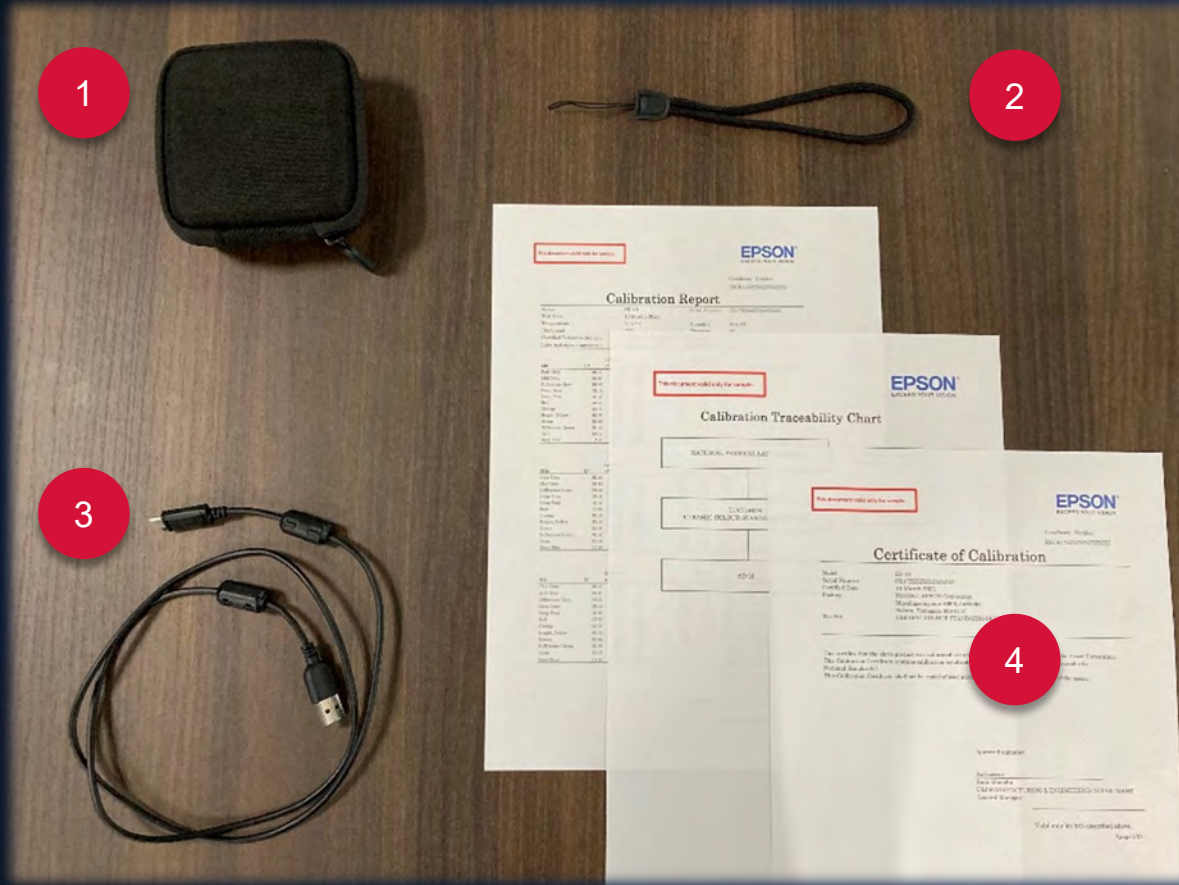
Time
Saved

Reduced
Costs

Competitive Comparison

	Epson SD-10	X-Rite i1Studio (Calibrite ColorChecker Studio)	Pantone Capsure RM200-BPT01	X-Rite i1Pro3 (Basic Package)
MSRP	\$899 (TBD)	~\$550	\$806	\$1,625
USB Connectivity	Yes	Yes	Yes	Yes
Wireless Connectivity	Bluetooth	No	Bluetooth	No
Battery Powered	Yes	Yes	Yes	No
Built-in Display	Yes	No	Yes	No
Standalone Operation	Measure; compare A/B	No	Yes	No
Aperture (mm)	7.6	6	8	4.5
Spectrometer or Colorimeter	Spectro	Spectro	Colorimeter	Spectro
Create Color Palettes	Yes	No	No	No
Mobile App	Yes	No	Yes	No
Create ICC Profiles	No	Yes	No	Yes

What's in the box?



1. Protective storage / travel case
2. Wrist strap
3. USB-C to USB-A cable
(for charging and optional USB connection)
4. Calibration certificates

Not pictured:

- SD-10 (Product SKU: B41CK17201)
- Document CD
- “Start Here” Guide
- 2-year limited warranty

Why buy the Epson SD-10?



Epson SD-10

\$899 MSRP
ESTIMATED

Available September 2022

- **Professional Spectrophotometer**
 - Epson unique MEMS technology and measurement features expected from an advanced, professional color device.
- **Cable-free & Battery Powered**
 - Long-life, battery-powered operation
 - Bluetooth® wireless connectivity - no need to carry cables
- **Built-in High-Quality Color LCD Screen**
 - See color data quick with one click
- **Innovative Companion Mobile App**
 - Build custom color palettes
 - PANTONE® included - Find nearest PANTONE® colors
 - Compare to printer color capabilities
- **Direct Workflow Integration**
 - Integrate into Epson Edge Print – Save time by measuring color directly into the printing process



Specifications are Subject to Change Without Notice

1. Certain features require the Epson Spectrometer Mobile App and compatible smartphone. Data usage fees may apply.
2. PC connectivity requires the Epson Edge Print software installed and licensed on a Windows PC. Epson Edge Print is sold separately.

Epson, MicroPiezo, PrecisionCore, PrecisionDot, UltraChrome, SpectroProofer, BorderFree, SureColor and TFP are trademarks or registered trademarks, Epson Preferred is a service mark, and EPSON Exceed Your Vision is a registered logo mark of Seiko Epson Corp. All other product brand names are trademarks and/or registered trademarks of their respective companies. Epson disclaims any and all rights to these trademarks.

© Epson America, Inc. 2022 EH August 2022

www.proimaging.epson.com